

The Welcome walk

30 mins

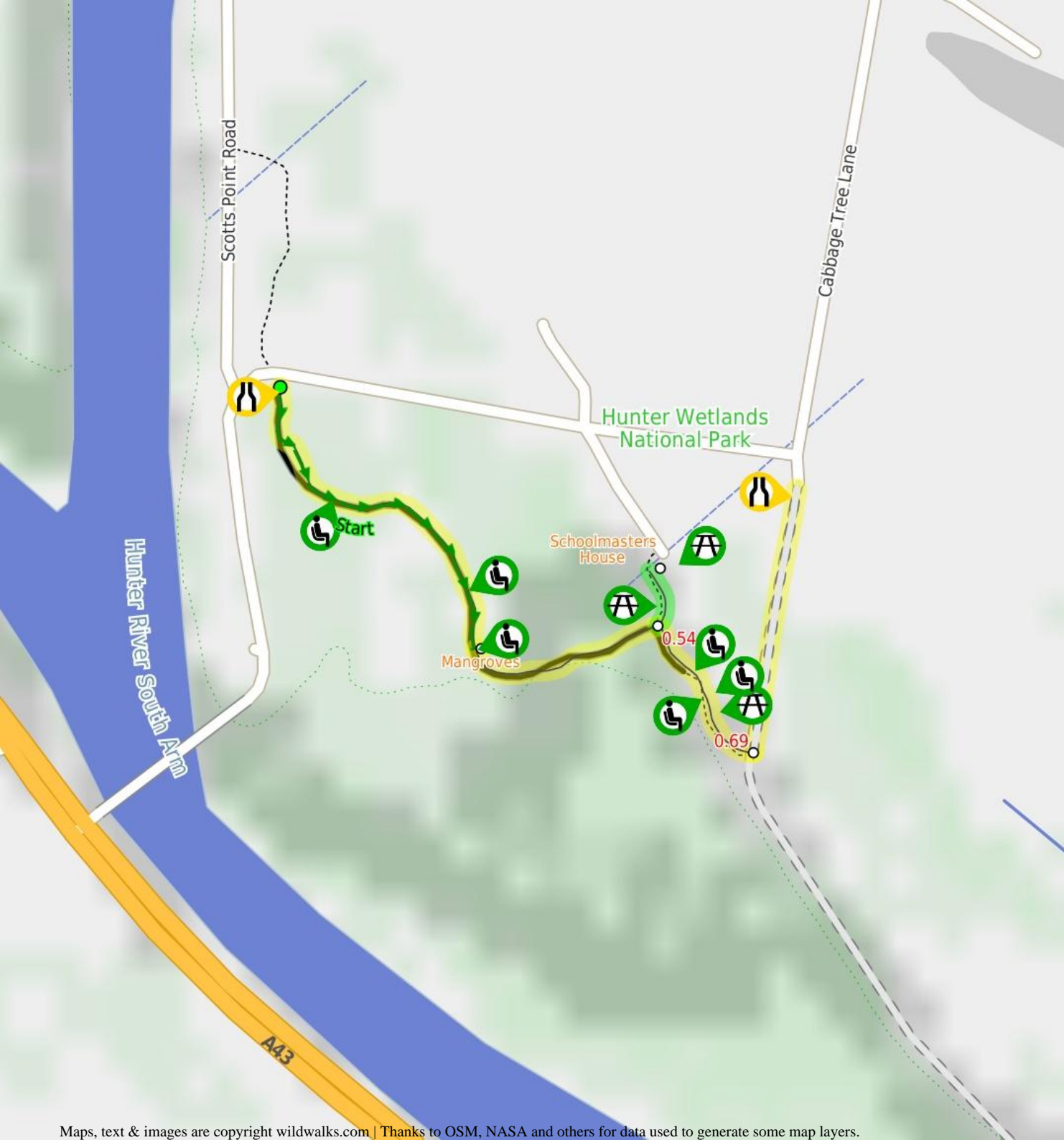
Easy track



945 m One way

↑ 3m

Come and meander at your own pace through this unique saltmarsh ecosystem. The timber boardwalk guides you among the mangroves as you keep an eye out for baby fish and crabs while also enjoy the birdlife. There are seats along the way making it easy to stop and just watch. There are information signs so you can get a deeper understanding of how precious this ecosystem is. Take the short side trip to the old Schoolmaster's House and step back in time exploring the historic artefacts and displays. The walk finishes with a stroll through Sue's Garden then along Cobbans Track to the car park. If you don't organise a lift from the end, allow extra time and retrace your steps or return along the road.



Are you ready to have fun?

Please ensure you and your group are well prepared and equipped for all possible hazards and delays. Check park closures, weather information and Fire Danger Rating before setting out. Optional side trips and alternate routes noted are not included in this walks overall grade, length or time estimate. Please allow extra time for resting and exploring areas of interest. The authors, staff and owners of wildwalks take care in preparing this information but will not accept responsibility for any inconvenience, loss or injury you may experience. Please take care, have fun - Happy Walking.

Getting there Traveling by car is the only practical way to get to Mangrove Boardwalk car park (gps: -32.8447, 151.6974). Car: There is free parking available.

Traveling by car is the only practical way to get back from Cobbans car park (gps: -32.8456, 151.7024). Car: There is free parking available.

Find up to date and more information including; travel directions, weather, park closures and walker feedback at <http://wild.tl/tww>

0 | Mangrove Boardwalk car park

(350 m 5 mins) From the Mangrove Boardwalk car park on Millams Rd Kooragang, (with the large 'Welcome to Kooragang Wetlands' sign) this walk follows the 'Mangrove Boardwalk' arrow along the timber boardwalk directly away from the road. This walk gently meanders along the boardwalk for about 80m to cross a bridge with (90cm high) hand railings, to come to a seat about 50m later. This walk then continues for the next 160m, passing a few information signs to find another seat. The walk continues along the boardwalk through the open wetlands for another 60m to come to a third seat (on the left).

0.35 | Mangroves

Mangroves are a type of resistant, salt tolerant and pretty cool tree. They are a type of halophyte, a plant that grows in salty water. They are perfectly adapted for life in harsh coastal conditions and salt marshes like this one. The plants contain systems to manage the salt levels and root system to anchor in different areas from deep mud to rocky coastlines. The roots also have aerial shoots to help deal with the particular low oxygen levels of mud. The mangroves are great and environmentally critical to the survival of many animals like crabs and birds.

0.35 | Boardwalk seating area

(190 m 3 mins) Continue straight: From the seat, this walk follows the timber boardwalk south initially keeping the seat to the left and past the 'Mangroves' information sign. This walk continues for about 180m, passing a few more information signs to come to a 3-way intersection.

0.54 | Optional sidetrip to Schoolmasters House

(60 m 1 mins) Veer left: From the intersection, this walk follows 'schoolmasters house' sign gently uphill along the concrete path.

After about 20m the path leads past a picnic table (on the left) and continues for about 30m to come to the front of the 'School Masters House' (on the right). Access to the old school house is either via smaller steps or around the far side by heading through the car park where there are a few picnic tables. At the end of this side trip, retrace your steps back to the main walk then Turn left.

0.54 | Schoolmasters House

The schoolmaster's house building is now used as the Kooragang Wetlands Information Centre. The building is open to the public (phone 02-4964 9308), with some interesting displays. In 1955 there were over 50 families and this school in the area, when the island was devastated by a massive flood. Following the flood, the area then was taken under state control and was leased for grazing. The school opened in 1873 and closed in 1968. There are two main entrances. The back entrance has 3 14cm steps to get inside. [More info.](#)

0.54 | Mangrove Boardwalk int.

(160 m 2 mins) Turn right: From the intersection, this walk follows 'Cobbans Creek' arrow sign along the timber boardwalk keeping the open area to the left. After about 40m the boardwalk ends and this walk heads along an asphalt path, for about 10m to a seat and the 'Sue's Garden' sign (both on the left). From here this walk continues along the asphalt path for about 110m, passing two more seats and a picnic table (on the left) to cross a short timber bridge and come to the Cobbans Track T-intersection, marked by the 'Cobbans Creek' sign.

0.69 | Cobbans Track int.

(250 m 4 mins) Turn left: From the intersection, this walk follows the wide gravel trail gently uphill, in the opposite direction of the 'Cobbans Creek' arrow, initially keeping the timber bridge to the left. This walk continues straight for about 250m to then head around the metal gate beside the timber bollards to the Cobbans car park, marked by the 'Cobbans Track' sign just off the side of Millams Rd, Kooragang.





This page is designed to give you a sense of the facilities that help improve access for people with disabilities or mobility restrictions. See tracknotes and map for navigation, point of interest and other information. See the Accessibility Details page for specific information about each facility.

Parking: There are 0 designated accessible parking areas on this walk.

Toilets: There are 0 toilets on this walk.

Seats: There are 7 seats on this walk. They are on average 110m apart, with a maximum gap of 240m.

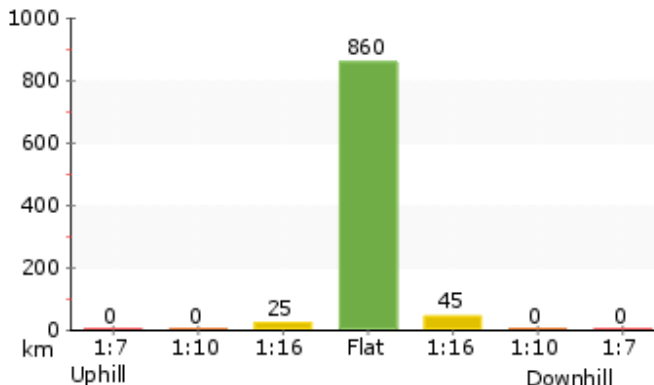
Surface

The first 550m of this walk follows timber boardwalks, the next 130m is along asphalt footpath. The final 250m of the walk is along a gravel/dirt trail that may become a little boggy after rain.

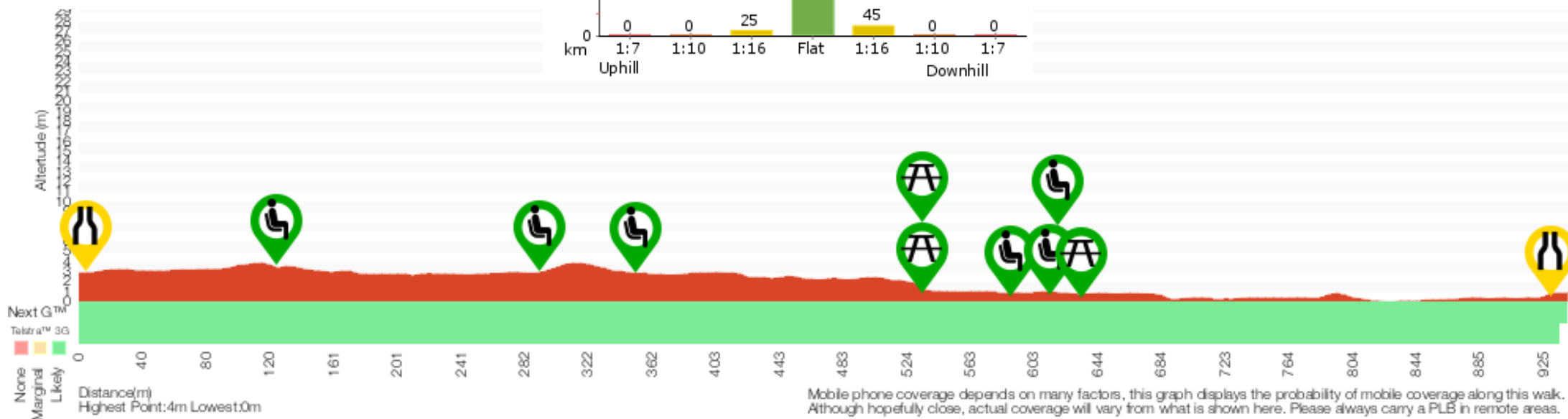
Steepness

This walk is flat with short hills less than 1:12 steep. Access into the old Schoolmaster's House requires going up a series of steps.

This graph shows how steep the track is.



Grade 2/6 Easy track		
Length	945 m One way	
Time	30 mins	
Quality of track	Clear and well formed track or trail (2/6)	
Signs	Clearly signposted (1/6)	
Experience Required	No experience required (1/6)	
Weather	Weather generally has little impact on safety (1/6)	
Infrastructure	Generally useful facilities (such as fenced cliffs and seats) (1/6)	





1 Pinch Point (10m)

Concrete wheel stops at edge of carpark. The gap between the wheel stops is 1.2m, and 12cm high.



2 Seat (130m)

A timber bench seat, 46cm high, 29cm deep and 1.8m wide with no arm or backrest.



3 Seat (290m)

A timber bench seat, 46cm high, 30cm deep and 1.97m wide with no arm or backrest.



4 Seat (350m)

A timber bench seat, 50cm high, 36cm deep and 1.66m wide with no arm or backrest.



5 Picnic Table (530m)

A timber slat picnic table and bench seats. The table is 74cm high, 79cm deep and 1.9m wide. The seats are 43cm high, 19cm deep and 1.9m wide (no backrest). on a (4.2x4.2m) paved area, 5m from main track.



6 Picnic Table (530m)

Two timber slat picnic table and bench seats. The tables are 69cm high, 79cm deep and 1.9m wide. The seats are 44cm high, 18cm deep and 1.9m wide (no backrest). Behind the school masters house.



7 Seat (590m)

A timber seat, 53cm high, 44cm deep and 1.9m wide with a 19cm high arm and 46cm backrest. The seat is 2m from the track over grass.



8 Seat (610m)

A timber seat, 48cm high, 44cm deep and 1.7m wide with a 18cm high arm and 50cm backrest. The seat is 10m from the track over grass.



9 Seat (620m)

A timber bench seat, 43cm high, 25cm deep and 1.9m wide with no arm or backrest. About 4m over the grass from the track.



10 Picnic Table (630m)

A timber slat picnic table and bench seats. The table is 80cm high, 79cm deep and 1.9m wide. The seats are 49cm high, 19cm deep and 1.9m wide (no backrest). on a (4.2x4.2m) paved area, 10m from main track.



11 Pinch Point (930m)

Timber bollard pinchpoints around edge of carpark. The gap between the gate and bollard is 1m, and about 1m high.